

MODULE #7
WORKSHEET

THE WORLD OF WASTE



Be A Detective: Take a home-trash survey. Make a chart to see how much trash your family is generating for one dinner. One day. One week. What was used? Plastic? Glass? Cardboard? How much was thrown away? How much was recycled? How much was composted? Use the graph on the next page.

Home Trash Survey

INITIAL INVESTIGATION:

Beginning Date: _____, Ending Date: _____

PLASTIC (containers, plastic wrap, packaging, bottles)	PAPER (cardboard, newspapers, junk mail, etc.)	GLASS (bottles, jars)	LANDFILL (dirty napkins, dirty cardboard, etc)	COMPOST (food waste)

© 2020 ECO HERO KIDS FOUNDATION ALL RIGHTS RESERVED

You may not copy, reproduce, distribute, publish, display, perform, modify, create derivative works, transmit, or in any way exploit any such content, nor may you distribute any part of this content over any network, including local area network, sell or offer it for sale, or use such content to construct any kind of database.

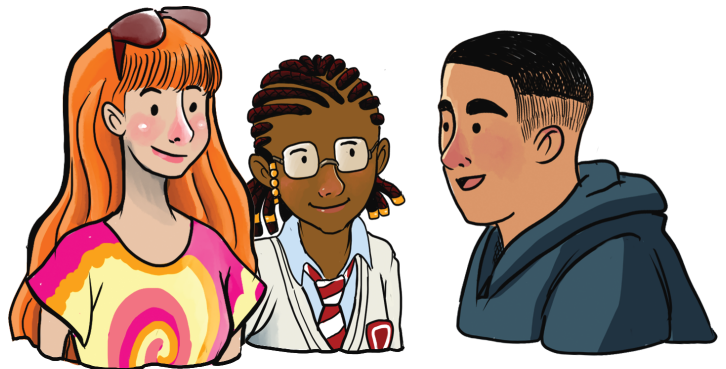
PLASTIC (containers, plastic wrap, packaging, bottles)	PAPER (cardboard, newspapers, junk mail, etc.)	GLASS (bottles, jars)	LANDFILL (dirty napkins, dirty cardboard, etc)	COMPOST (food waste)

BRAINSTORM with your friends and family.

After results are in, you and your family can try again... Think about the different things you can do.

Examples:

- Use your own bags at the market
- Use cloth napkins
- Don't use plastic utensils
- Separate your trash
- Compost your food waste
- Reuse jars for storage.



ADJUSTED BEHAVIOR DUE TO FINDINGS: _____ (DATE)

PLASTIC (containers, plastic wrap, packaging, bottles)	PAPER (cardboard, newspapers, junk mail, etc.)	GLASS (bottles, jars)	LANDFILL (dirty napkins, dirty cardboard, etc)	COMPOST (food waste)
TOTAL	TOTAL	TOTAL	TOTAL	TOTAL

(This graph will probably be A LOT smaller)

ACTION: _____ Spread the word.

Have a Waste Free Party and invite all your friends.

Get your extended family involved.

Measure your impact.

Write an article for your school newspaper.